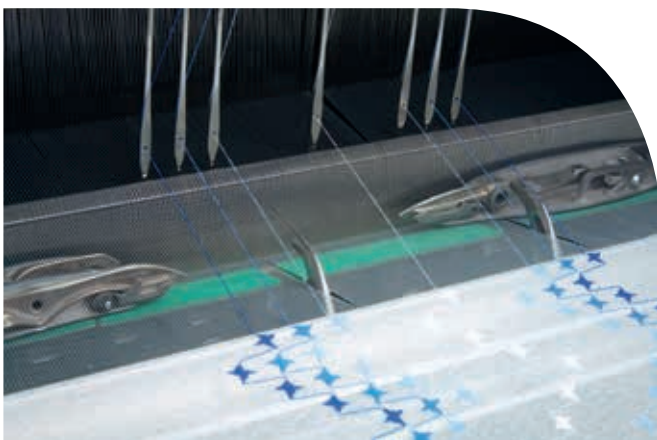


P1 & A1 weaving machines with Open Reed Weave (ORW) technology and embroidery unit

The Open Reed Weave (ORW) technology developed by DORNIER considerably extends pattern versatility for home textiles and clothing and eliminates downstream processing.



DORNIER A1 air-jet weaving machine with embroidery unit



DORNIER P1 rapier weaving machine with embroidery unit

Stitch weaving – efficiency thanks to DORNIER ORW technology

The production of figures highlighted in color in fabrics for clothing and home textiles requires a certain technical effort such as increasing the number of shafts or using Jacquard equipment for weaving Scherli effects or subsequent further processing through embroidery.

Using DORNIER's ORW technology, it became possible to successfully integrate embroidery in the weaving process so that embroidery and weaving can run at the same time on DORNIER weaving machines.

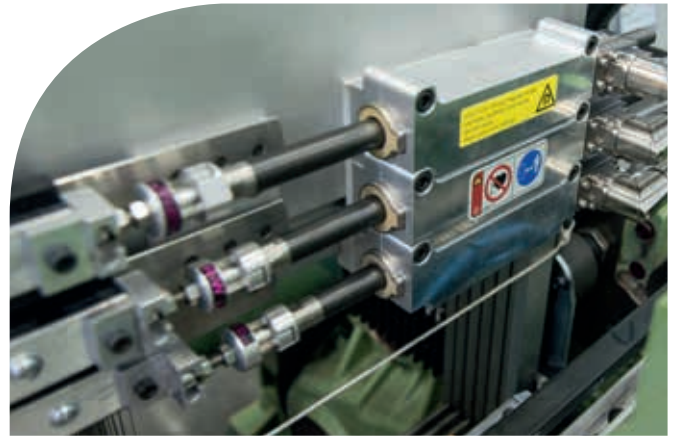
The system is based on the DORNIER weaving machines and is modular which means the weaving machine retains its full performance capability and complete application spectrum during normal weaving operation.

Technology

Opening the reed upwards allows inserting additional pattern threads between the reed and weaving shafts using special thread guides.

These additional pattern threads are passed to the weaving process using a bypass, comprising an additional warp stop motion and a deflection system above the weaving shafts, using the movable threads guides.

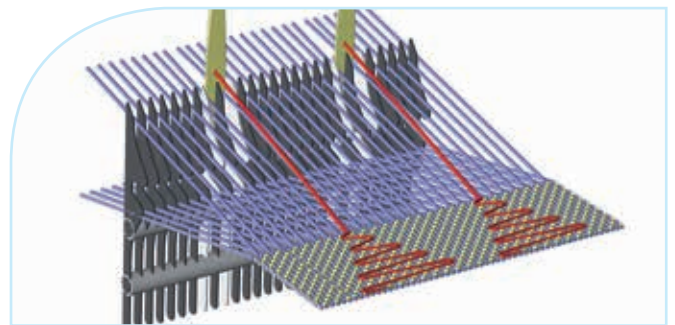
After the additional pattern threads have dipped into the lower shed, the filling is inserted which binds the additional pattern threads. This creates a filling effect on the fabric surface that can be controlled freely within certain limits using a lifting plan and is comparable to embroidery and Scherli patterns. This technology can be applied to the DORNIER system family consisting of rapier and air-jet weaving machines.



Lateral shifting 60 mm

The DORNIER weaving machines with embroidery unit stands for:

- High functional reliability
- Machine construction and process engineering “Made in Germany”
- Flexibility
- Ergonomics
- Simple handling



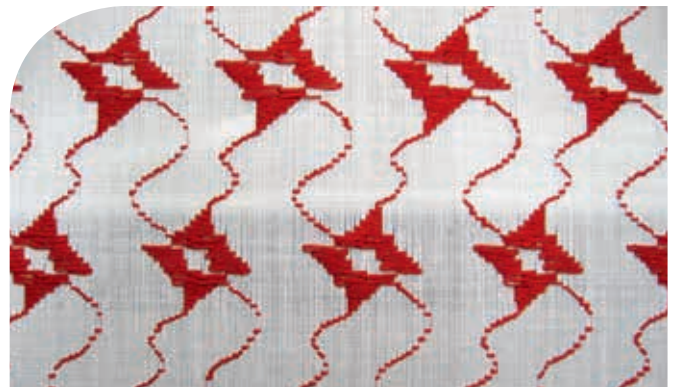
Basic principle of embroidery unit

Fields of application

The DORNIER ORW technology allows wide diversity in patterns for clothing and decorative fabrics or specifically applied reinforcements in technical textiles. The fabric is already manufactured in finished form on the weaving machine which increases value creation.



Pattern woven with one embroidery axis



Pattern woven with two embroidery axes

For more information please contact us

Lindauer DORNIER GmbH
 Rickenbacher Str. 119
 88131 Lindau, Germany

Telephone: +49 8382 703 1611
 E-Mail: sales.wm@lindauerdornier.com
 Web: www.lindauerdornier.com